

# MixxMaster

Portable Mixers - Agitators  
&  
"Tote Tank Agitators"  
&  
SYSTEMS

MIXING --- PUMPS --- TANKS

By: Warren Products (Mfg. & Rep.)  
P.O. Box 1474  
Monroe, NC 28111  
(O) 704-764-7181  
(M) 704-219-1515  
weg@vnet.net

## MIXERS



### MODEL ANBD

- Heavy duty direct drive air operated mixer
- 1/3 rd. to 6 h.p.
- Bi-Directional
- Adjustable mount

#### Options

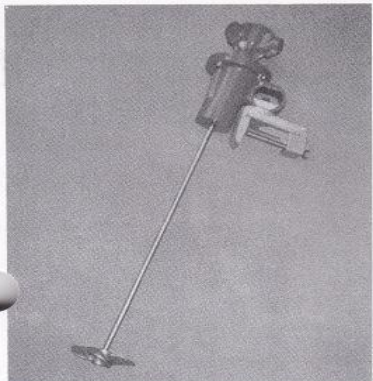
- Shaft size and length
- Propeller size and number
- Propeller style
- Mounting style

### MODEL ANBD-IS

- Interchangeable shaft style
- Heavy duty, direct drive air mixer
- 1/3 rd. to 6 h.p.
- Adjustable mount

#### Options

- Shaft size and length
- Propeller size and number
- Propeller style
- Mounting style



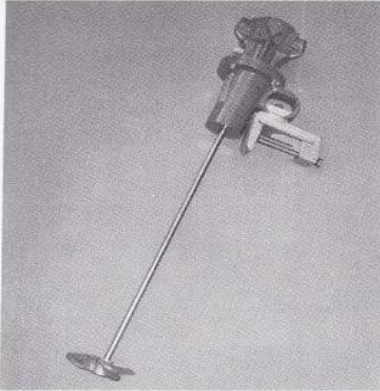
### MODEL ANBD-3PM

- 3 or 5 piston motor styles
- Direct drive, heavy duty
- Low CFM consumption
- Quiet operation

#### Options

- Reversing valve
- Shaft size and length
- Propeller size and number
- Mounting style
- Motor size

## MIXERS



### MODEL ANBD-5PM

- 5 piston air motor
- Direct drive, high torque
- **Low CFM, quiet operation**
- Bi-Directional

#### Options

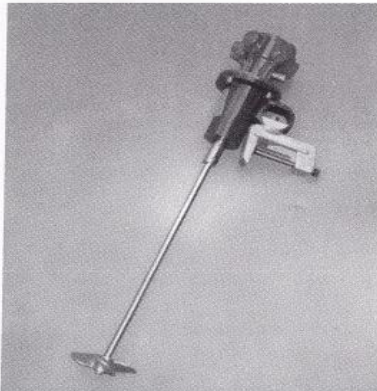
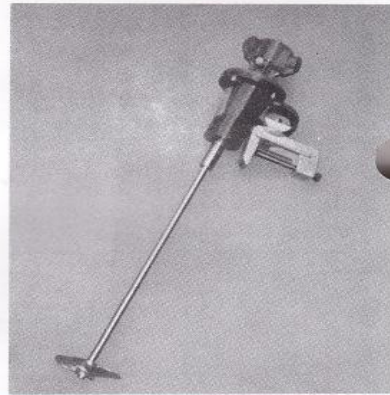
- Field modifiable
- Shaft size and length
- Props or blades
- Reversing valve

### MODEL ANBD-3PM-IS

- 3 piston air motor, 2 sizes
- **Low CFM, quiet operation**
- Interchangeable shaft
- Heavy duty direct drive

#### Options

- Shaft size and length
- Propeller size and number
- Mounting style
- Field modifiable



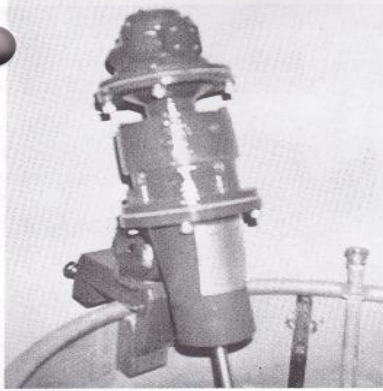
### MODEL ANBD-5PM-IS

- 5 piston air motor
- High torque
- **Low CFM, quiet operation**
- Interchangeable shaft

#### Options

- Field modifiable
- Blade and props
- Shaft size and props
- Mounting style

## MIXERS



### MODEL ANBG

- Geared type, air operated
- Lower speed, higher torque
- Bi-Directional
- Heavy duty

#### Options

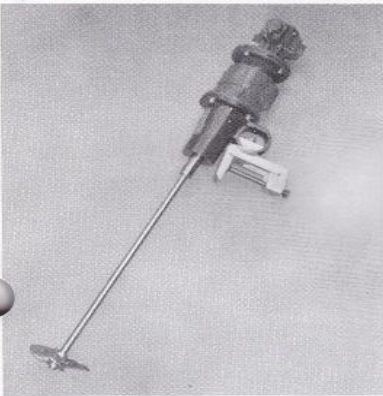
- Many ratios
- Reversing valve
- Shaft sizes
- Blade sizes and styles
- Field modifiable

### MODEL ANBG-IS

- Interchangeable shaft
- Geared style, heavy duty
- Bi-Directional
- Low speed, high torque

#### Options

- Many speeds and motor sizes
- Several props and blades
- Shaft sizes
- Field modifiable



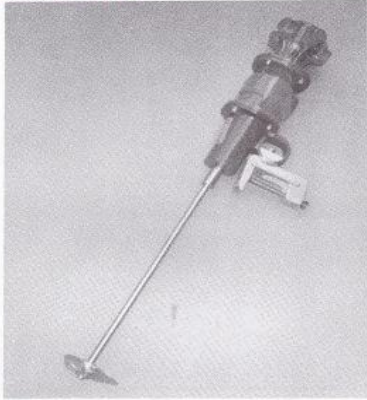
### MODEL ANBG-3PM-IS

- Interchangeable shaft
- Geared style, heavy duty
- **low CFM, quiet operation**
- Bi-Directional
- 3 Piston Air Motor

#### Options

- Field modifiable
- Shaft sizes and lengths
- Many ratios

## MIXERS



### MODEL ANBG-5PM-IS

- Interchangeable shaft
- **High torque, gearing style**
- **Low CFM, quiet operation**
- Bi-Directional

#### Options

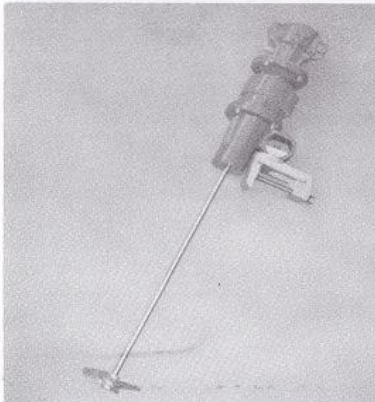
- Field modifiable
- Many speeds
- Blade styles
- Shaft sizes and length

### MODEL ANBG-3PM

- 3 piston motor, 2 sizes
- Heavy duty, geared type
- **Low CFM**
- Quiet operation
- High torque, low speed

#### Options

- Field modifiable
- Many ratios
- Reversing valve
- Blade sizes and styles



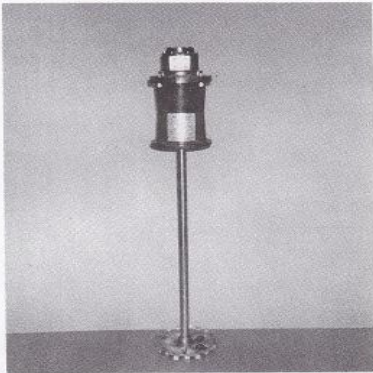
### MODEL ANBG-5PM

- 5 piston air motor
- High torque, low speed
- **Low CFM, quiet operation**
- Heavy duty

#### Options

- Field modifiable
- Blades and propellers
- Shaft sizes and lengths
- Bi-Directional

## MIXERS



### MODEL ATMC

- Tank mounted cowles
- Many sizes

#### Options

- Air or electric
- Blade size and shaft
- "IS" interchangeable shaft

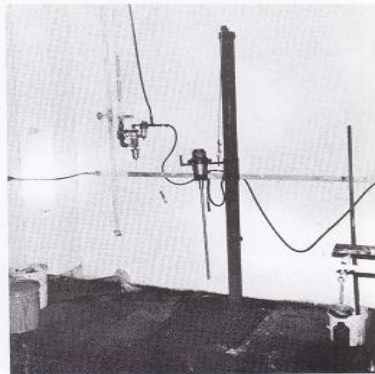


### MODEL ABCS

- Cage style, hook suspended
- Turn it on, walk away
- Protects tank and operator
- Many sizes and horsepowers

#### Options

- Air or electric
- Cage to fit tank
- Variable speed
- Shaft and blades



### MODEL ANBD-PM

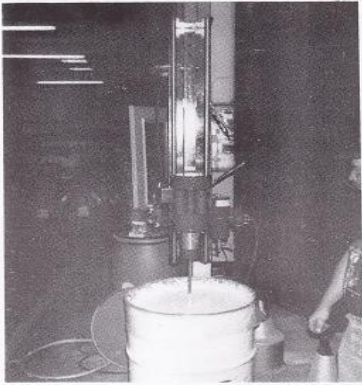
- Counter weighted mix station
- Air or electric

#### Options

- Overall weight and lift
- Horsepower
- Drum size
- Shaft and blades
- Free standing



## MIXERS



### MODEL "POST MOUNT" *with lift*

- Air over oil lift
- Post mount
- Floor mount
- Air or electric

#### Options

- Direct or geared
- Variable speed
- Reset position
- Locking position feature

### MODEL "POST MOUNT" *manual lift*

- Air, several sizes of motors
- 5 gallon to 55 gallon
- Bearing extension support

#### Options

- Variable speed, Bi-Directional
- Air or electric
- Travel length
- Blades and styles



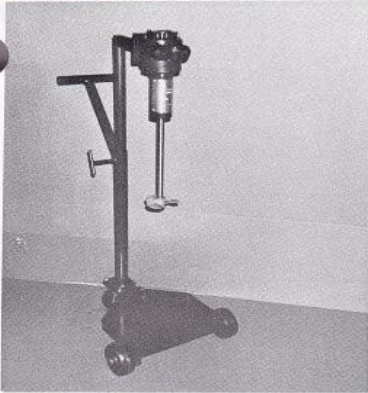
### MODEL "BUNG" MIXER

- 5 to 55 gallon
- Single or multi-blade
- 1/3 rd. to 6 h.p.
- Stainless Bung Adapter

#### Options

- Off Center Lids
- Large Folding Blades
- Multiple Blades
- High Pumping Turbines

## MIXERS



### PALE MIXERS

- Air or electric
- Bearing extension
- Designed to spec's
- Adjustable height

#### Options

Blade Styles  
1/2 to 6 h.p.  
Pales to 30 gallons

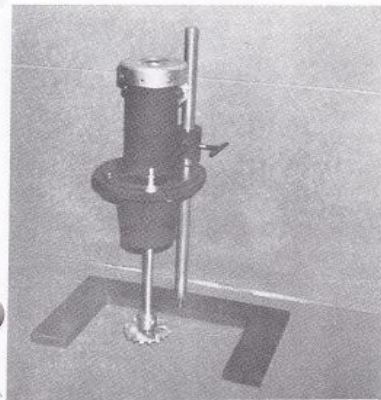
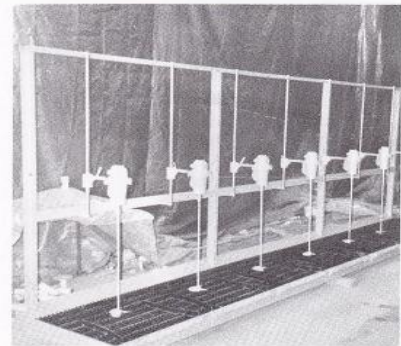


### MIX STATIONS

- Self contained, no spills
- Adjustable height
- Air or electric
- Bi-Directional
- Single or multi-station as shown

#### Options

Variable speed, Bi-Directional  
Air or electric  
Travel length  
Blades and styles  
Drum Lids  
Controls



### LAB MIXERS

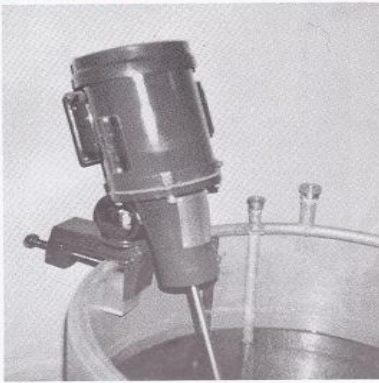
- Air or electric
- Adjustable height
- Valuable speed, AC or DC

#### Options

Travel height  
Blades or Propellers  
"IS" or standard



## MIXERS



### MODEL EMBD

- 1/4 to 2 h.p.
- Wash-Down Motors
- Stainless Steel Motors
- All voltages
- Fixed or variable speed

#### Options

- Shaft size & length
- Stainless steel or coated (Teflon)
- Blade or propellers
- Mountings

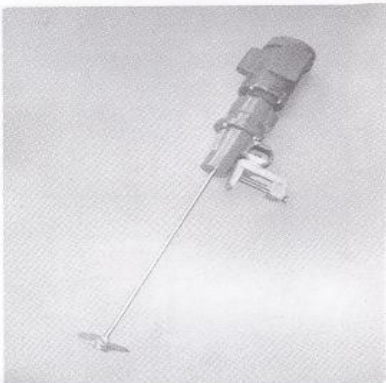
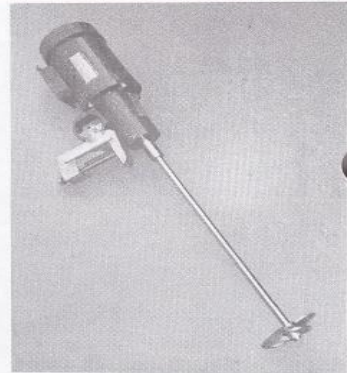


### MODEL EMBD-IS

- 1/4 to 2 h.p.
- Wash-Down Motors
- Stainless Steel Motors
- All voltages
- Fixed or variable speed
- Interchangeable Shafts

#### Options

- Shaft size & length
- Stainless steel or coated (Teflon)
- Blade or propellers
- Mountings



### MODEL EMBG

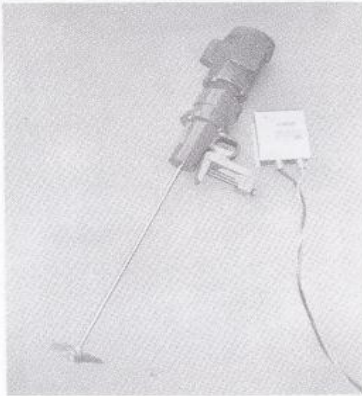
- 1/4 to 2 h.p.
- Wash-Down Motors
- Stainless Steel Motors
- All voltages
- Geared

#### Options

- Shaft size & length
- Blade or propeller
- Ratios
- Stainless or coated (Teflon)
- Mountings



## MIXERS



### MODEL EMBG-VS

- 1/4 to 2 h.p.
- Wash-Down Motors
- Stainless Steel Motors
- All voltages
- A.C. or D.C. drives
- Geared

#### Options

- Ratios
- Stainless or coated (Teflon)
- Blades or props
- Shaft size and length

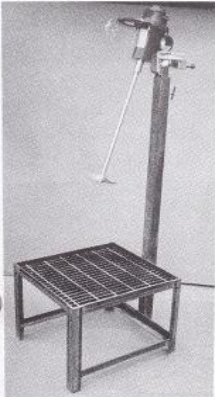
## MIXER STANDS

- Adjustable
- Air or electric mixers
- Tanks or Barrels
- Several Styles
- Direct Drive or Geared
- Splash Containment

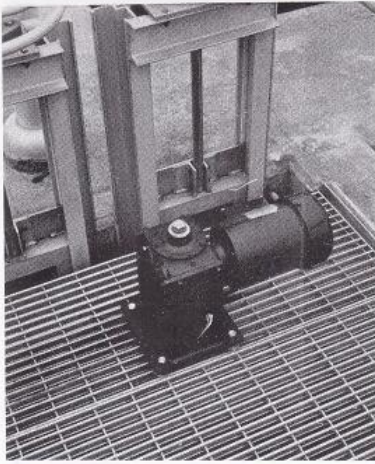


## MIXER STANDS (Less Drum)

- Air or Electric
- Fixed or Adjustable
- Splash Containment
- Angle or Straight Mount



## AGITATORS

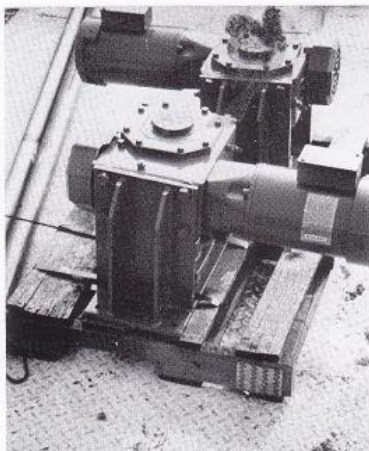
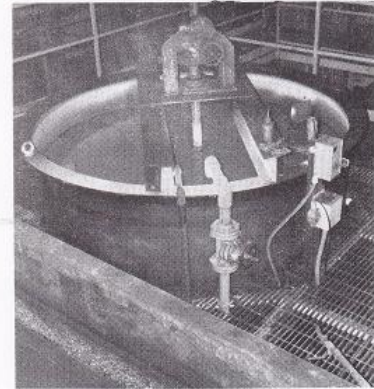


### FLASH MIXER

- Water Treatment
- Many Sizes
- Wash Down Motors
- Stainless Steel Motors
- All Voltages
- Many Options

## WASTE WATER

- Wetting Out Solids
- Suspensions
- Separations
- Many Sizes
- Many Options



### DRIVE ASSEMBLY

- Industrial
- Chemical
- Water or Waste Water
- Axial or Radial Turbines
- Heavy Duty Design

## AGITATORS



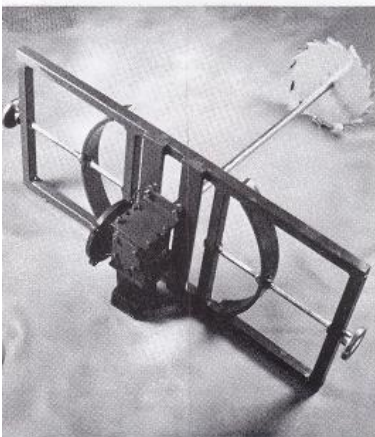
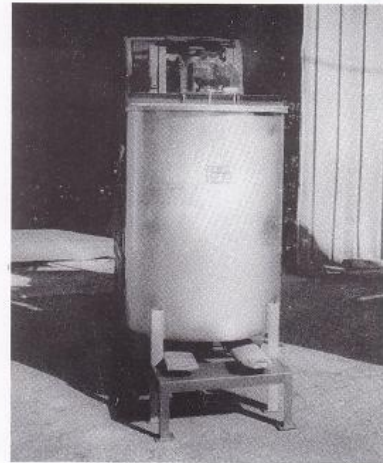
### Electric Agitators

- Rail mount
- Axial Turbine
- Radial Turbine
- Anchor/Sweeper
- Paddle



### Air Driven Agitator

Using 3 or 5 Piston Air Motor

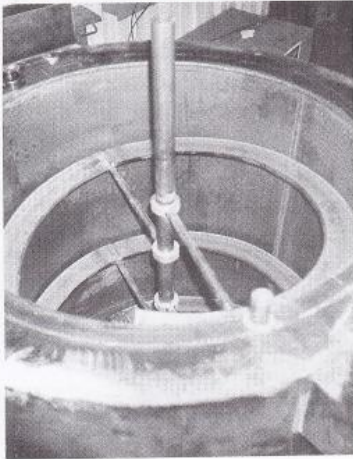


### Adjustable Mounting

Drum style



## AGITATORS



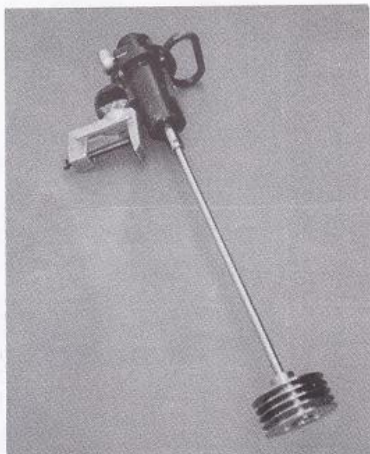
### Helix Style Agitator

Suitable for **highly viscous** product, radial and axial pumping for better product turn over and heat transfer.

Designed for your application and tank sizes related to process concerns.

### HV Series

- Drum or Small Tank
- Rolling Action, **NOT** a Spinning
- Air or Electric
- 4, 5, or 6 inch Head Size



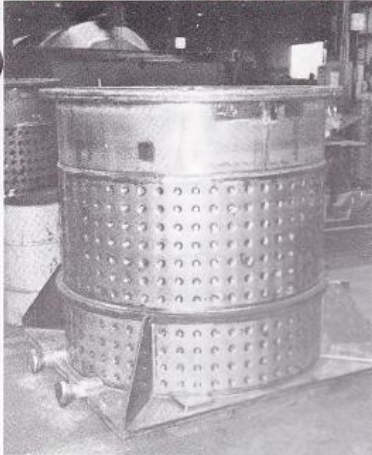
### "Disc" Mixer

Air or Electric  
Special applications for shear sensitive materials, solids suspension, a vacuum - lifting spinning type of action.

#### Options

- Disc Size
- Disc Spacing
- Construction

## TANKS - VESSELS - REACTORS TO SUIT APPLICATIONS



### Jacketed Open Top Tank

Portable for Heating and Cooling

### Pressure Vessel

Special Fittings  
with or without agitation

- Carbon Steel
- Stainless Steel Coated
- Exotic Metals



### Tank or Vessel

- Construction, Stainless Steel or Carbon Steel
- Fiberglass
- Poly's

## **Propellers and Blades**

***Square Pitch, 3 Blade Propellers, 316 Stainless,  
RIGHT HAND—Sizes 3 inch to 12 inch***

***Square Pitch, 3 Blade Propellers, 316 Stainless,  
LEFT HAND—Sizes 3 inch to 15 inch***

***High Shear, 3 Blade Propellers with equally drilled  
pattern.***

***High Pitch, 3 Blade Propellers to 18 inches and Foil Style  
Blades***

***Centrifugal Blades for 55 Gallon Drums, Stainless,  
Sizes to 11 inches(open)***

***“Hanson” Plunge Blades, Stainless and Aluminum, Thin  
Product or Very Thick Product, 1 Gallon Container  
Blades to #12 Blades and Centrifugal Blades***

***Axial Turbine Agitator Blades, Stainless,  
Made to Order...***

***Radial Turbine Agitator Blades, Stainless,  
Made to Order...***

***High Speed Disperser Blades, Stainless or  
Composite(high impact plastics) to 30 inches***

# “TOTE TANK AGITATOR”



- MIX
- BLEND
- SUSPEND
- AGITATE
- DISSOLVE



## SEQUENCE TO INSTALL A "TOTE TANK AGITATOR"



### Step 1.

Operator positions the "OPEN" agitator over the tank.



### Step 2.

Lifting the **SLIDE HANDLE** folds up the blades. Slowly lower the unit into the tank, once in the opening, release the slide.



### Step 3.

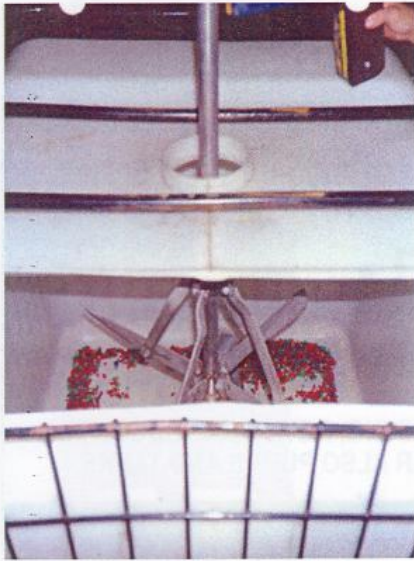
Continue to lower the unit into the tank. When the blades pass through the opening they will open by their own weight.

**THIS IS NOT A CENTRIFUGAL BLADE!!**

# SEQUENCE TO INSTALL A "TOTE TANK AGITATOR"

## Step 4.

The tote agitator and mounting adapter are now in position centered onto the opening of the tote tank.



## Step 5.

Looking into the **DEMONSTRATION** tank, NOTE the size of the blades 28 inches across for 275 tank. **OPENING FOR DEMONSTRATION ONLY.**

Ready to run, rotation is clock-wise from top view. typical range of speeds 0 to 60 rpm's.



## Step 6.

**REMOVING THE AGITATOR.** Turn the unit off, slowly lift the unit until the SLIDE handle reaches the opening, PULL UP on the slide to fold the blades. Lift slowly until the folded blades are in the opening, **STOP!**

Excess products drains off blades and into tote. **YOU NOW HAVE A CONSISTENT PRODUCT, TOP TO BOTTOM, IN THE TANK TOTE.**

## Step 7.

Holding "slide", unit is removed with hoist.



### **OBJECTIVE:**

- MILD TO MEDIUM AGITATION IN A TOTE TANK, TO KEEP PRODUCTS IN SUSPENSION.
- MINIMAL AIR ENTRAINMENT, MINIMAL SHEAR.
- AIR OR ELECTRICAL AND VARIABLE SPEED.
- BI-DIRECTIONAL.
- CONSTRUCTION: CARBON STEEL, STAINLESS STEEL, AND TEFLON COATED.
- UNITS AVAILABLE FOR MOST TOTE STYLES.
- CONNECTS TO MOUNTING ADAPTER, NOT TO BOTTLE.
- DEMONSTRATIONS AT YOUR PLANT.
- OTHER MIXING EQUIPMENT: QUADRO, PROCESS MIXING, REYNOLDS INDUSTRIES, POLAR PROCESS, NORESTONE, AQUA SHEAR ALSO PUMPS AND TANKS.